



# WE'RE COUNTING ON YOU, OKLAHOMA!

Fill out your 2020 Census

Oklahoma stands to lose an estimated \$1,675 per person per year in vital community programs that use Census data for funding.

## The Census impacts:



### Community Services

Roads, hospitals, schools, emergency services and more.



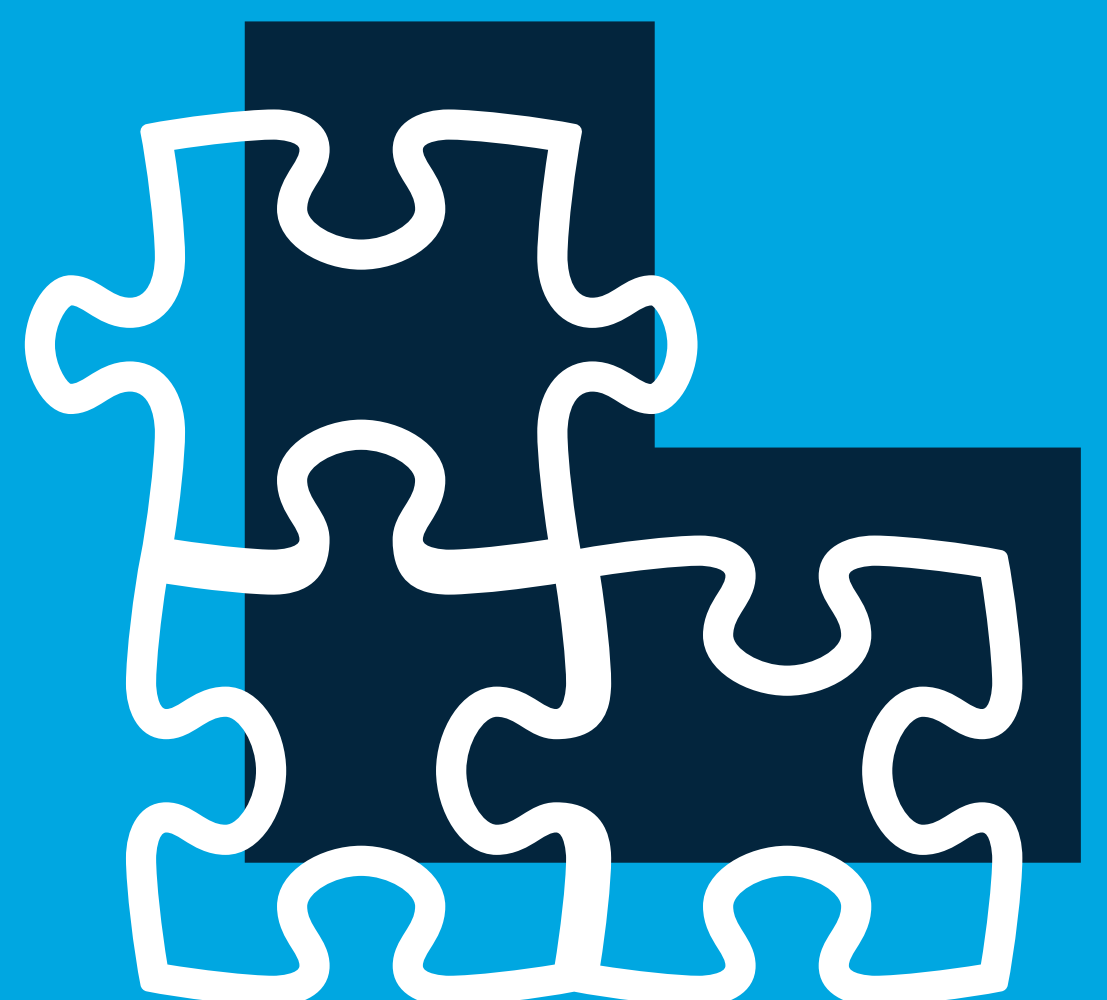
### Fair Representation

The number of representatives for your state and local government.



### Civic Duty

The Census is in the Constitution and dates back to 1790.



### Redistricting

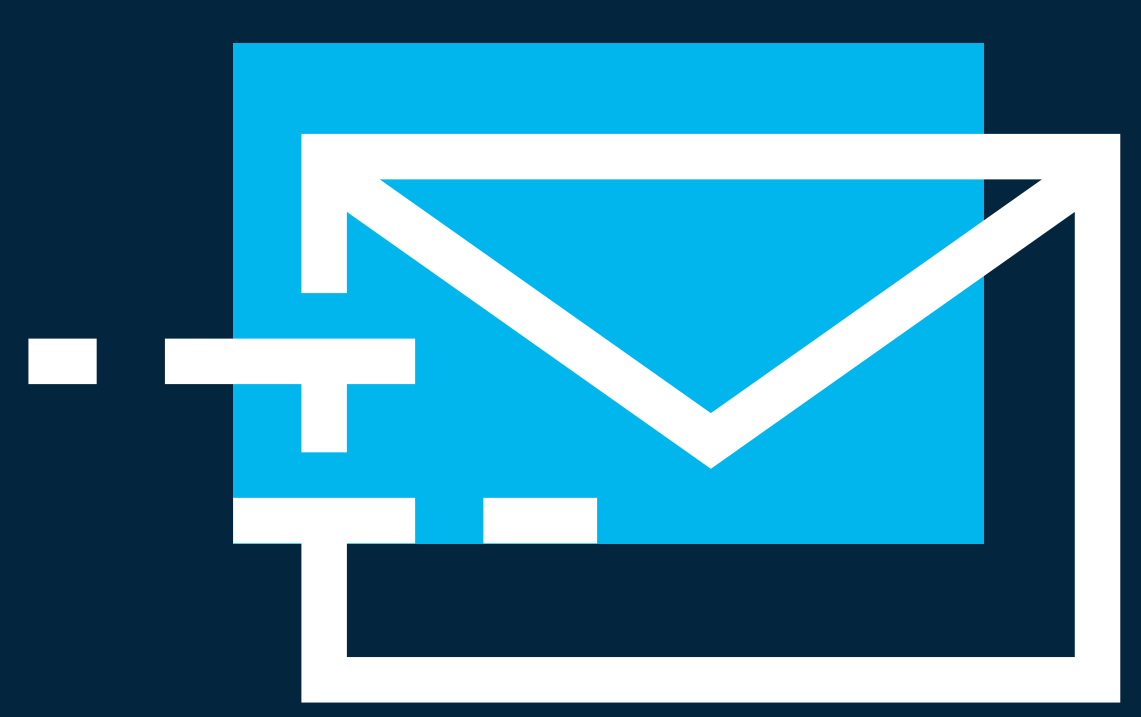
Voting districts are based on the results of the Census.

Learn more at: [OKLetsCount.org](http://OKLetsCount.org)

# WHEN EVERYONE COUNTS, EVERYONE WINS!

Fill out your 2020 Census

## Three ways to complete the Census:



### Mail

Forms will be mailed to your home in mid-March.



### Phone

Ideal for those with disabilities or language barriers.



### Online

For the first time you'll have the option to fill out the Census online.



### Confidential

By law, all Census responses are private and cannot be shared with the FBI, CIA, ICE, IRS or any agency that isn't the Census Bureau.

Learn more at: [OKLetsCount.org](https://OKLetsCount.org)